

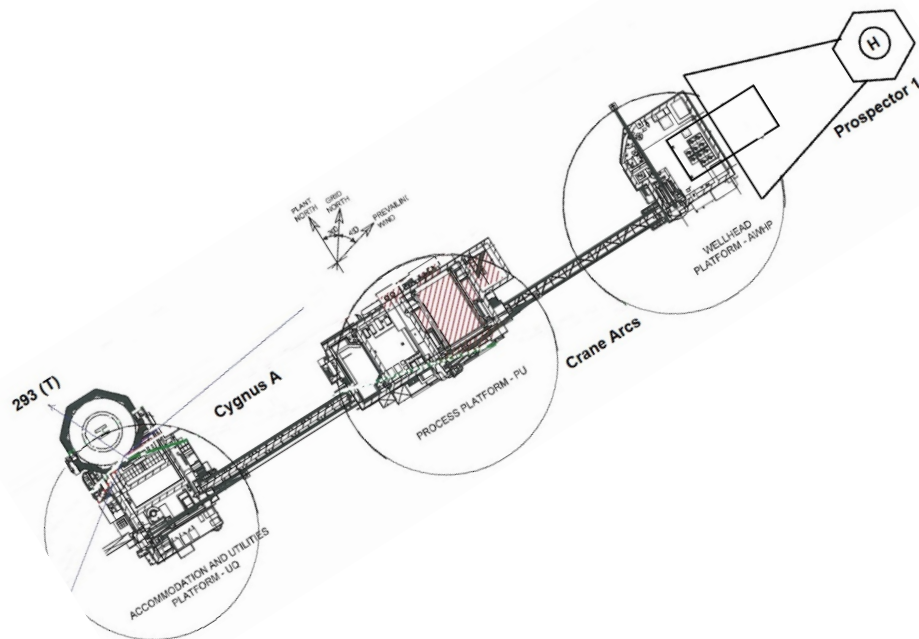
TO:	ALL PILOTS	DATE:	22/8/22
TLN NUMBER:	22 - 2022		
SUBJECT:	Cygnus A with Prospector 1 alongside		

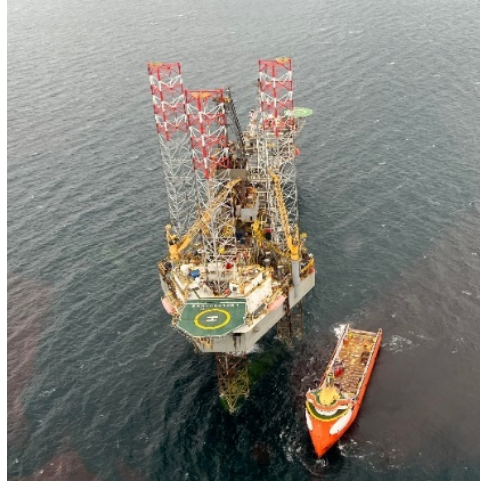
1. Comments

The Prospector 1 jack-up rig is now alongside the wellhead platform of the Cygnus Alpha complex. The rig will remain in this location until end of Q1 2023.

The Cygnus A complex consists of 3x bridge-linked platforms in a NE-SW orientation as shown in the diagram below. The rig/wellhead platform is located at the opposite end to the helideck. Due to the considerable distance between the Prospector 1 and the Cygnus A helideck there should be no conflict in helicopter operations between the two helidecks. Additionally, crane operations on the Prospector 1 may continue, if essential, while helicopter operations are carried out to the Cygnus A. However, if a crane is on the flight path, or in an awkward position, the crew may request for it to be stowed prior to approach and landing. This *may* occur if the wind is from a South Westerly Direction.

2. Photo/Dwg





3. Existing HLL limitations

Cygnus A

Wind (T°)	Kts	Limitation /Comment		Non-Compliances
		Manned platform <ul style="list-style-type: none"> • Table 1(T) if overflight of 5:1 infringements unavoidable • Possible turbulence from turbine exhaust east of helideck <i>Turbulence reports requested.</i> 	5:1	East and west access platforms

Prospector 1

Wind (T°)	Kts	Limitation /Comment		Non-Compliances
		Jack Up <ul style="list-style-type: none"> • Table 1(T) if overflight of foam monitor platforms is unavoidable • Stable deck conditions to apply whilst on tow i.e. maximum of 1° pitch & roll and 2m heave • Approved friction surface - no net 	LOS 5:1 Misc.	Stbd corner of emergency generator module approx. 5.5m from edge of SLA. Painted in obstruction markings Foam monitor platforms - (port, starboard & forward) approx. 2.80m from SLA plus various structures below deck on stbd side Comprehensive electronic pitch, roll and heave measuring equipment not available on site

4. Additional limitations

Cygnus A

Wind (T°)	Kts	Limitation /Comment		Non-Compliances
		Nil		

Prospector 1

Wind (T°)	Kts	Limitation /Comment		Non-Compliances
		Nil		

These restrictions/changes shall remain in force until (unless previously revoked or suspended)	31 March 2023
---	----------------------

Aircrew are requested to submit voyage reports advising HCA if the information above is incomplete or incorrect