



HELIDECK INFORMATION PLATE

Fwd

Wind Peak

XWPK

GENERAL INFORMATION:

OPERATOR	HLAC ISSUE DATE	HLAC EXPIRY DATE	
Cadeler AS	22 Jan 2025	30 May 2026	
HELIDECK ELEVATION	VAR	POSITION	
0ft	Check	Forward starboard	
INSTALATION HEIGHT	HIGHEST OBSTACLE	D VALUE	
0ft	Within 5nm:	UK: 22.8m	NOR Dh:18.24m (1.25D)
T VALUE	TD/PM & H LIGHTING	PITCH / ROLL / HEAVE CATEGORY	
15.8t	Yes	1	

COMMUNICATIONS:

VHF FREQUENCIES		NDB	
Traffic: Check	Logistics: Check	510Khz	Ident: OZVU2

TURNAROUND:

FUELING INSTALATION	STARTING EQUIPMENT
No	No

LIMITATION & NON-COMPLIANCES:

LIMITATIONS / COMMENTS	WIND DIRECTION (T°)	WIND SPEED (Kts)
Wind turbine Installation Vessel – Jack Up		
Table 1(T) if overflight of 5:1 items are unavoidable		
No helicopter operations unless jacked up		
Check height of helideck and top of installation for each location		
Main crane boom MUST be elevated by at least 50 deg for all helicopter operations to ensure LOS clearance.		

NON-COMPLIANCES - 210°

Nil

NON-COMPLIANCES - 150°

Nil

NON-COMPLIANCES - 5:1

Fwd radar @ emergency exit upto approx 2.8m from and 2.6m below helideck.

NON-COMPLIANCES - Miscellaneous

Nil

IMAGE LIBRARY:

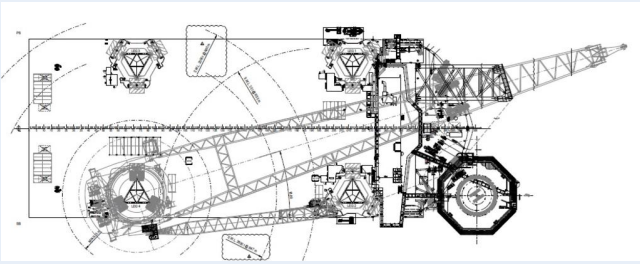
STARBOARD SIDE



PORT SIDE



PLAN DRAWING



ADDITIONAL (IF AVAILABLE)

