

HELIDECK INFORMATION PLATE

**Construction
Support Vessel**

Skandi Implementer

XMIM

GENERAL INFORMATION:

OPERATOR	HIP ISSUE DATE	HLAC EXPIRY DATE
DOF Management A/S	03 Mar 2025	28 May 2025
HELIDECK ELEVATION	INSTALATION HEIGHT	POSITION
118ft	152ft	Mobile
MAX WEIGHT	D VALUE	VAR
12.6t	22.2m	Check
TD/PM & H LIGHTING	PITCH / ROLL / HEAVE CATEGORY	HIGHEST OBSTACLE
No	3	Within 5nm: Check

NORWAY SPECIFIC INFORMATION:

YEAR KEEL LAID	SAFE LANDING AREA	Dh
2017	m	17.76m

COMMUNICATIONS:

VHF FREQUENCIES	NDB	FUELING	STARTING
Traffic: Check Logistics: Check	Freq: 410Khz Ident: MCSD3	No	No

TURNAROUND:

LIMITATION / COMMENTS:

TEMPORARY LIMITATION NOTICES

Nil

LIMITATIONS	WIND DIRECTION (T°)	WIND SPEED (Kts)
SSV Cat 3 - Daylight operations only (CAP437 areas)		
Table 1 (T) if overflight of Forward access platform is required		
Vessel will contact HCA before any UKCS operations		
HMS Rev.9B + Lights fitted.		
Helideck net MUST be fitted in Norway		

COMMENTS

Nil

NON-COMPLIANCES:

210°	150°
Nil	Nil

NON-COMPLIANCES:

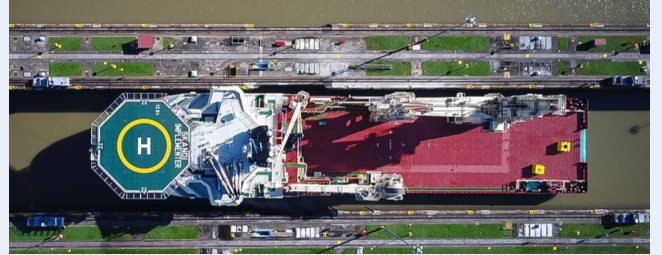
5:1	Misc
Navigation lights on forward access approx 3m from and 2.6m below helideck.	Norway non-compliance: No dual agent extinguisher, handrails at aft accesses are above deck level
	No Circle/H lights fitted.

IMAGE LIBRARY:

PLAN DRAWING

NOT PROVIDED BY ASSET OPERATOR

ADDITIONAL (IF AVAILABLE)



PORT SIDE



STARBOARD SIDE

