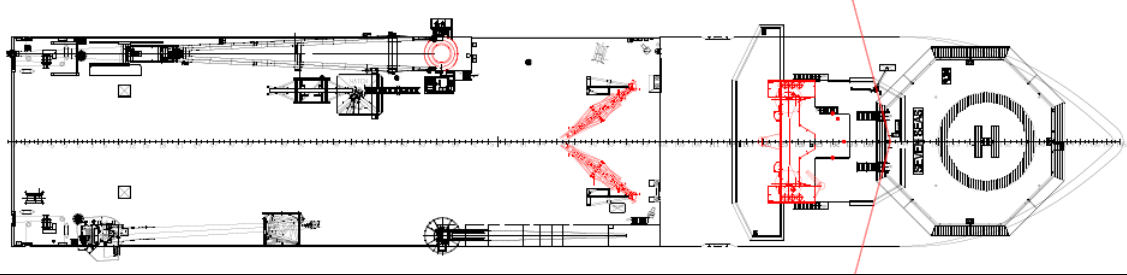




HELIDECK INFORMATION PLATE

Certificate Expiry Date: 26 Oct 2025

HELIDECK Elev 95 ft	VAR Check	POSITION Check	XSVN Seven Seas		
HEIGHT OF INSTALLATION: HIGHEST OBSTACLE WITHIN 5NM:		212 Check	VHF Check	NDB N/A	Issue Date 18 Dec 2023
FUELLING INSTALLATION: STARTING EQUIPMENT:		No No	Operating Company Subsea 7		Issued By Helideck Certification Agency
(Norway 1.25D - 'H' = HELIDECK D value: P/R/H Category: Max Weight: Circle & H Lights:		17.76) 22.2 3 12.0t Yes			



Wind (T°)	Kts	Limitation / Comment
		OSCV • Cat 3 Bow Helideck – Day Ops only when vessel into wind Cat 2 Night Ops permitted when vessel heading downwind. (ICAO Heliport manual Doc 9261 edition 4 applies) • Table 1 (T) if overflight of ship's bow cannot be avoided on take-off. • TD/PM & H Lights fitted to helideck • HMS Rev 9b fitted inc. deck repeater lights
		Non-Compliance
	5:1	Ship's bow
	Misc	Approved friction surface