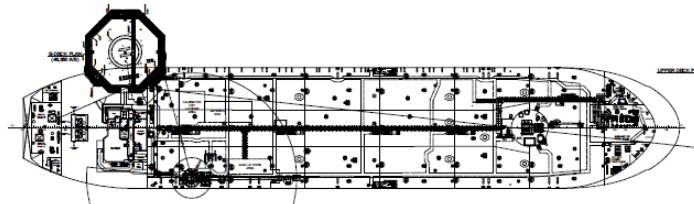




HELIDECK INFORMATION PLATE

Certificate Expiry Date: 30 Jun 2024

HELIDECK Elev 95 ft	VAR 1W	POSITION N59 36.57 E001 04.53	EGZB Mariner B	
HEIGHT OF INSTALLATION: 165		VHF Traf 122.180	NDB 331	Issue Date 06 Feb 2024
HIGHEST OBSTACLE WITHIN 5NM: Mariner A 549ft		Log 125.405		MNB
FUELLING INSTALLATION: No		Operating Company		Issued By
STARTING EQUIPMENT: Yes		Equinor		Helideck Certification Agency
(Norway 1.25D - 'H' = 26.1)				
HELIDECK D value: 20.9				
P/R/H Category: 1				
Max Weight: 16.0				
Circle & H Lights: Yes				



Wind (T°)	Kts	Limitation / Comment
		FSU - Stern Deck Port side • Table 1(T) if overflight of port access platform unavoidable • Table 1(T&L) if overflight of shuttle tanker (when attached) is unavoidable. • HMS Rev.9B and lights fitted.
		Non-Compliance
	150°	Folding handrails on main access point are 0.75m over height if left up
	5:1	Port access platform infringes sector - 3m from edge of SLA Various deck structures below helideck to starboard (fwd & aft) Shuttle tanker (when attached)