



# HELIDECK INFORMATION PLATE

Pipe Laying Vessel

Lorelay

XLOR

## GENERAL INFORMATION:

<b>OPERATOR</b>	<b>HLAC ISSUE DATE</b>	<b>HLAC EXPIRY DATE</b>	
All Seas	05 Dec 2024	12 Nov 2025	
<b>HELIDECK ELEVATION</b>	<b>VAR</b>	<b>POSITION</b>	
108ft	Check	Mobile	
<b>INSTALATION HEIGHT</b>	<b>HIGHEST OBSTACLE</b>	<b>D VALUE</b>	
190ft	Within 5nm: Check	UK: 27.6m	NOR Dh:27.6/SLA=27.6m (1.25D)
<b>T VALUE</b>	<b>TD/PM &amp; H LIGHTING</b>	<b>PITCH / ROLL / HEAVE CATEGORY</b>	
12.8t	No	3	

## COMMUNICATIONS:

<b>VHF FREQUENCIES</b>		<b>NDB</b>	
Traffic: Check	Logistics: Check	530Khz	Ident: LLY

## TURNAROUND:

<b>FUELING INSTALATION</b>	<b>STARTING EQUIPMENT</b>
No	Yes

## LIMITATION & NON-COMPLIANCES:

LIMITATIONS / COMMENTS	WIND DIRECTION (T°)	WIND SPEED (Kts)
Table 1 (T) if overflight of 5:1 items unavoidable		
Daylight ops only for UKCS		
HMS Rev.9B+Lights fitted.		
Helideck net must be fitted for flight operations in Norway.		
*Maximum single pax weight "150kg" due to inbound pax scale weight range*		

### NON-COMPLIANCES - 210°

Nil

### NON-COMPLIANCES - 150°

Nil

### NON-COMPLIANCES - 5:1

Forward access (2.7m from SLA)  
Vessel bow 16m below deck extends 10m from SLA.

### NON-COMPLIANCES - Miscellaneous

No Circle and H lights fitted.

# IMAGE LIBRARY:

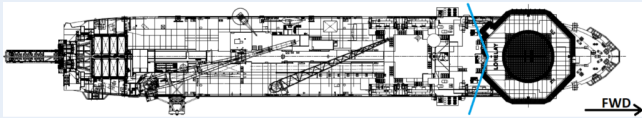
STARBOARD SIDE



PORT SIDE



PLAN DRAWING



ADDITIONAL (IF AVAILABLE)

