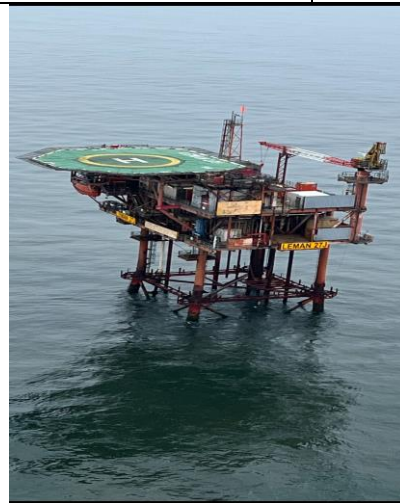
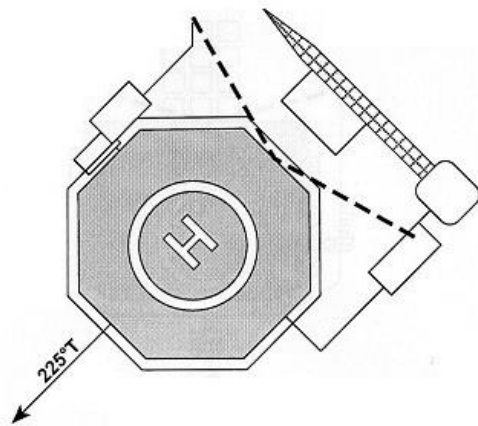




# HELIDECK INFORMATION PLATE

HELIDECK Elev <b>107 ft</b>	VAR <b>Check</b>	POSITION <b>N53 02.00 2 13.20</b>	EGLZ <b>Leman 27J</b>	
HEIGHT OF INSTALLATION: HIGHEST OBSTACLE WITHIN 5NM:		<b>128ft</b> <b>Check</b>	VHF <b>123.630</b>	NDB <b>-</b> Issue Date <b>24/3/23</b>
FUELLING INSTALLATION: STARTING EQUIPMENT:		<b>No</b> <b>No</b>	Operating Company  <b>Perenco</b> Issued By <b>Helideck Certification Agency</b>	
HELIDECK D value: P/R/H Category: Max Weight: Circle & H Lights:		<b>19.64</b> <b>F</b> <b>5.9</b> <b>No</b>		



Wind (T°)	Kts	Limitation /Comment
	+30Kts	NUI <ul style="list-style-type: none"> <li>Daylight operations only - Aiming circle &amp; "H" lights not fitted</li> <li>No helicopter operations - No perimeter net test results</li> <li>Table 1 (T) if overflight of 5:1 items unavoidable</li> <li>Cleared for AW139 (6.8t)</li> </ul>
		<b>Non Compliance</b>
	5:1	SE & NW access platforms
	Misc	No automatic fire-fighting facilities