



# HELIDECK INFORMATION PLATE

**NUI**

**Hamilton North**

**EGGZ**

## GENERAL INFORMATION:

<b>OPERATOR</b>	<b>HLAC ISSUE DATE</b>	<b>HLAC EXPIRY DATE</b>	
ENI UK	06 Dec 2024	04 Mar 2025	
<b>HELIDECK ELEVATION</b>	<b>VAR</b>	<b>POSITION</b>	
112ft	2 W	N53 38.77 W003 28.67	
<b>INSTALATION HEIGHT</b>	<b>HIGHEST OBSTACLE</b>	<b>D VALUE</b>	
116ft	Within 5nm: OSI 121ft	UK: 14.65m	NOR Dh:N/Am (1.25D)
<b>T VALUE</b>	<b>TD/PM &amp; H LIGHTING</b>	<b>PITCH / ROLL / HEAVE CATEGORY</b>	
4.9t	No	0	

## COMMUNICATIONS:

<b>VHF FREQUENCIES</b>		<b>NDB</b>	
Traffic: 122.380	Logistics: Check	N/AKhz	Ident: N/A

## TURNAROUND:

<b>FUELING INSTALATION</b>	<b>STARTING EQUIPMENT</b>
No	No

## LIMITATION & NON-COMPLIANCES:

LIMITATIONS / COMMENTS	WIND DIRECTION (T°)	WIND SPEED (Kts)
NUI - No automatic fire-fighting facilities		
Daylight operations only - Circle & "H" lights not fitted		
Table 1 (T) if overflight of 5:1 items unavoidable		
Deck closed when Jack-up alongside		
Name abbreviated on deck to HAM-NORTH		

### NON-COMPLIANCES - 210°

Outside edge of perimeter net frame up to 300mm adl. Handrail NW corner of helideck is marginal infringement. Deck area painted red / white next to handrail

### NON-COMPLIANCES - 150°

Nil

### NON-COMPLIANCES - 5:1

NE & SW access points.

### NON-COMPLIANCES - Miscellaneous

Height limitation in 210 OFS & 1st sector of LOS is 150mm.

# IMAGE LIBRARY:

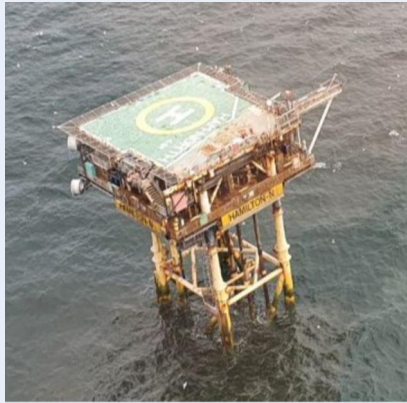
**LOOKING NORTH (T)**



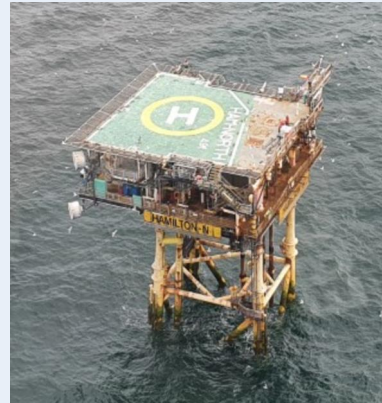
**LOOKING EAST (T)**



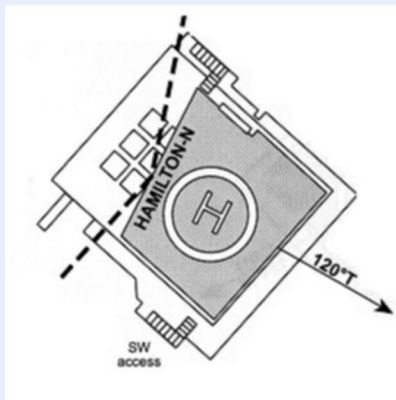
**LOOKING SOUTH (T)**



**LOOKING WEST (T)**



**PLAN DRAWING**



**ADDITIONAL (IF AVAILABLE)**

