



# HELIDECK INFORMATION PLATE

**NUI**

**Franklin**

**EGFR**

## GENERAL INFORMATION:

<b>OPERATOR</b>	<b>HLAC ISSUE DATE</b>	<b>HLAC EXPIRY DATE</b>	
Total E&P UK Ltd	03 Dec 2024	04 Mar 2025	
<b>HELIDECK ELEVATION</b>	<b>VAR</b>	<b>POSITION</b>	
103ft	0°	N 56.58° E 001.52°	
<b>INSTALATION HEIGHT</b>	<b>HIGHEST OBSTACLE</b>	<b>D VALUE</b>	
158ft	Within 5nm: Elgin - 509	UK: 23m	NOR Dh:N/Am (1.25D)
<b>T VALUE</b>	<b>TD/PM &amp; H LIGHTING</b>	<b>PITCH / ROLL / HEAVE CATEGORY</b>	
15t	Yes	0	

## COMMUNICATIONS:

<b>VHF FREQUENCIES</b>		<b>NDB</b>	
Traffic: 122.325	Logistics: 129.70	N/AKhz	Ident: N/A

## TURNAROUND:

<b>FUELING INSTALATION</b>	<b>STARTING EQUIPMENT</b>
No	No

## LIMITATION & NON-COMPLIANCES:

LIMITATIONS / COMMENTS	WIND DIRECTION (T°)	WIND SPEED (Kts)
Gull Scat fitted (bird scaring system - irregular loud noises)		
All weather information from Elgin Platform (5Km)		
Table 1 (T) if overflight of the 5:1 infringements is unavoidable		

### NON-COMPLIANCES - 210°

Lifting padeyes and handrails NW & SW - marginal (painted in obstruction colours).

### NON-COMPLIANCES - 150°

Nil

### NON-COMPLIANCES - 5:1

North and South access platforms infringe sector

North horizontal flare boom and support cables (marginal).

### NON-COMPLIANCES - Miscellaneous

No automatic fire-fighting facilities.

## IMAGE LIBRARY:

### LOOKING NORTH (T)

NOT PROVIDED BY ASSET OPERATOR

### LOOKING EAST (T)

NOT PROVIDED BY ASSET OPERATOR

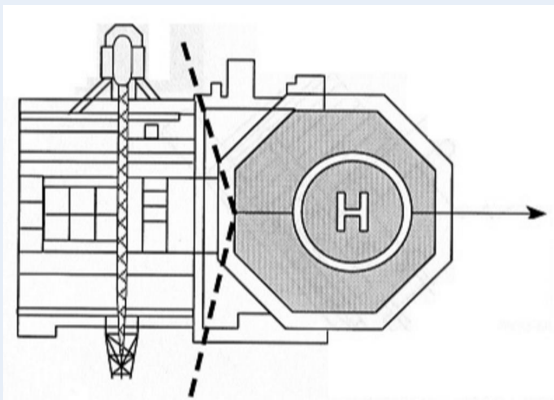
### LOOKING SOUTH (T)

NOT PROVIDED BY ASSET OPERATOR

### LOOKING WEST (T)

NOT PROVIDED BY ASSET OPERATOR

### PLAN DRAWING



### ADDITIONAL (IF AVAILABLE)

