

HELIDECK INFORMATION PLATE

Floatel

Floatel Superior

XFSP

GENERAL INFORMATION:

OPERATOR	HIP ISSUE DATE	HLAC EXPIRY DATE
Floatel International Operations AS	24 Mar 2025	18 May 2025
HELIDECK ELEVATION	INSTALATION HEIGHT	POSITION
121ft	171ft	Mobile
MAX WEIGHT	D VALUE	VAR
14.6t	27.4m	Check
TD/PM & H LIGHTING	PITCH / ROLL / HEAVE CATEGORY	HIGHEST OBSTACLE
No	1	Within 5nm: Check

NORWAY SPECIFIC INFORMATION:

YEAR KEEL LAID	SAFE LANDING AREA	Dh
May 2008	m	27.4m

COMMUNICATIONS:

TURNAROUND:

VHF FREQUENCIES	NDB	FUELING	STARTING
Traffic: Check Logistics: Check	Freq: 598Khz Ident: FSP	Yes	No

LIMITATION / COMMENTS:

TEMPORARY LIMITATION NOTICES

Nil

LIMITATIONS	WIND DIRECTION (T°)	WIND SPEED (Kts)
Floatel - CAT 1 Helideck.		
HMS Rev 9B + Lights fitted		
Daylight operations only - UKCS.		
Friction test valid to 15.03.2026 - average 0.86mu.		
150kgs maximum weight for passenger or single freight due to scales limit		
Helideck net should be fitted only in Norway (DIFFS Fitted)		

COMMENTS

Nil

NON-COMPLIANCES:

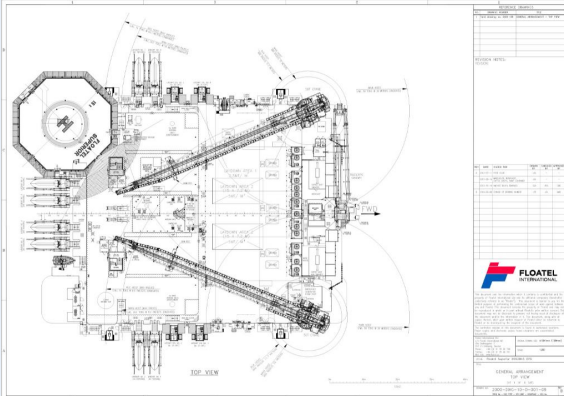
210°	150°
Antenna units 200mm ADL at fwd deck edge.	Nil

NON-COMPLIANCES:

5:1	Misc
Nil	Circle and H lights not fitted

IMAGE LIBRARY:

PLAN DRAWING



ADDITIONAL (IF AVAILABLE)



PORT SIDE



STARBOARD SIDE

