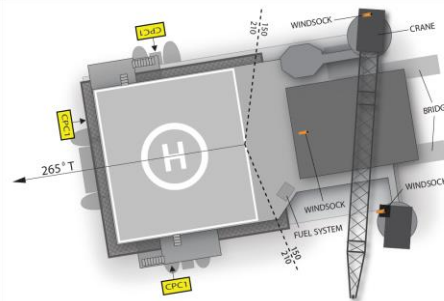
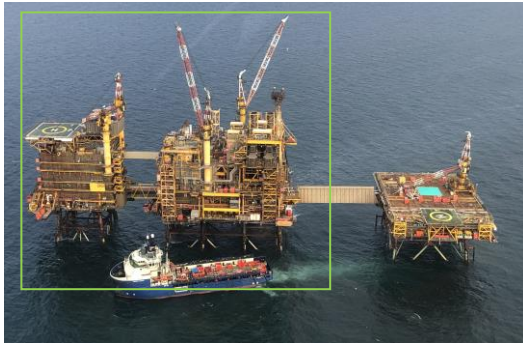




# HELIDECK INFORMATION PLATE

**Certificate Expiry Date: 12<sup>th</sup> October 2024**

HELIDECK Elev <b>184 ft</b>	VAR <b>2 W</b>	POSITION <b>N53 50.7 W003 35.0</b>	EGMM <b>CPC-1</b>	
HEIGHT OF INSTALLATION: HIGHEST OBSTACLE WITHIN 5NM:		<b>397ft</b> <b>Check</b>	VHF <b>122.380</b>	NDB <b>N/A</b> Issue Date <b>21 Jun 2023</b>
FUELLING INSTALLATION: STARTING EQUIPMENT:		<b>No</b> <b>Yes</b>	Operating Company  <b>Spirit Energy</b> Issued By <b>Helideck Certification Agency</b>	
HELIDECK D value: P/R/H Category: Max Weight: Circle & H Lights:		<b>22.2m</b> <b>F</b> <b>12.6</b> <b>Yes</b>		



Wind (T°)	Kts	Limitation /Comment
<ul style="list-style-type: none"> <li>• 045-135</li> <li>• 045-135</li> <li>• 045-135</li> <li>• 135-160</li> <li>• 060-100</li>   <li>• 010-060</li> </ul>	<ul style="list-style-type: none"> <li>• 0-20</li> <li>• 21-30</li> <li>• 31 plus</li> <li>• 21 plus</li> <li>All</li> </ul>	<p>Manned platform</p> <ul style="list-style-type: none"> <li>• Use zero wind for performance calculations</li> <li>• Extreme caution due to possible turbulence</li> <li>• Emergency only</li> <li>• Extreme caution due to possible turbulence</li> <li>• Main generators running without head recovery add 12 to ambient temperature for performance calculations</li> <li>• CPC-1 helideck closed when wind is above 7kts and flare is unlit. No restriction when topside is depressurised (Assume topside pressurised unless advised)</li> <li>• Aircraft hangar - may cause turbulence</li> <li>• Table 1 (T) if overflight of 5:1 infringements unavoidable</li> </ul>
		<b>Non-Compliance</b>
	150°	Refuelling unit marginal infringement in second sector of LOS
	5:1	North & south access platforms 4m from SLA
	Misc	Inboard perimeter lights are not co-incident with perimeter line Approved for S92 (MTOW 11861Kg) Callsign CPC-1